



Agilent 16800 Series Portable Logic Analyzers

Installation/Quick Start Guide

REPRODUCTION AND DISTRIBUTION OF THIS TECHNICAL
MANUAL IS AUTHORIZED FOR GOVERNMENT PURPOSES.



Agilent Technologies

Notices

© Agilent Technologies, Inc. 2006-2011

No part of this manual may be reproduced in any form or by any means (including electronic storage and retrieval or translation into a foreign language) without prior agreement and written consent from Agilent Technologies, Inc. as governed by United States and international copyright laws.

Manual Part Number

16800-97013

Edition

Third Edition, October 2011

Printed in Malaysia

Agilent Technologies, Inc.
1900 Garden of the Gods Road
Colorado Springs, CO 80907 USA

Microsoft[®] is a U.S. registered trademark of Microsoft Corporation.

Warranty

The material contained in this document is provided “as is,” and is subject to being changed, without notice, in future editions. Further, to the maximum extent permitted by applicable law, Agilent disclaims all warranties, either express or implied, with regard to this manual and any information contained herein, including but not limited to the implied warranties of merchantability and fitness for a particular purpose. Agilent shall not be liable for errors or for incidental or consequential damages in connection with the furnishing, use, or performance of this document or of any information contained herein. Should Agilent and the user have a separate written agreement with warranty terms covering the material in this document that conflict with these terms, the warranty terms in the separate agreement shall control.

Technology Licenses

The hardware and/or software described in this document are furnished under a license and may be used or copied only in accordance with the terms of such license.

Restricted Rights Legend

U.S. Government Restricted Rights. Software and technical data rights granted to the federal government include only those rights customarily provided to end user customers. Agilent provides this customary commercial license in Software and technical data pursuant to FAR 12.211 (Technical Data) and 12.212 (Computer Software) and, for the Department of Defense, DFARS 252.227-7015 (Technical Data - Commercial Items) and DFARS 227.7202-3 (Rights in Commercial Computer Software or Computer Software Documentation).

Safety Notices

CAUTION

A **CAUTION** notice denotes a hazard. It calls attention to an operating procedure, practice, or the like that, if not correctly performed or adhered to, could result in damage to the product or loss of important data. Do not proceed beyond a **CAUTION** notice until the indicated conditions are fully understood and met.

WARNING

A **WARNING** notice denotes a hazard. It calls attention to an operating procedure, practice, or the like that, if not correctly performed or adhered to, could result in personal injury or death. Do not proceed beyond a **WARNING** notice until the indicated conditions are fully understood and met.

16800 Series Logic Analyzers—At a Glance

The Agilent Technologies 16800 Series logic analyzers are portable logic analyzers that range from 34 to 204 logic acquisition channels and 48 pattern generator channels, depending on the model.

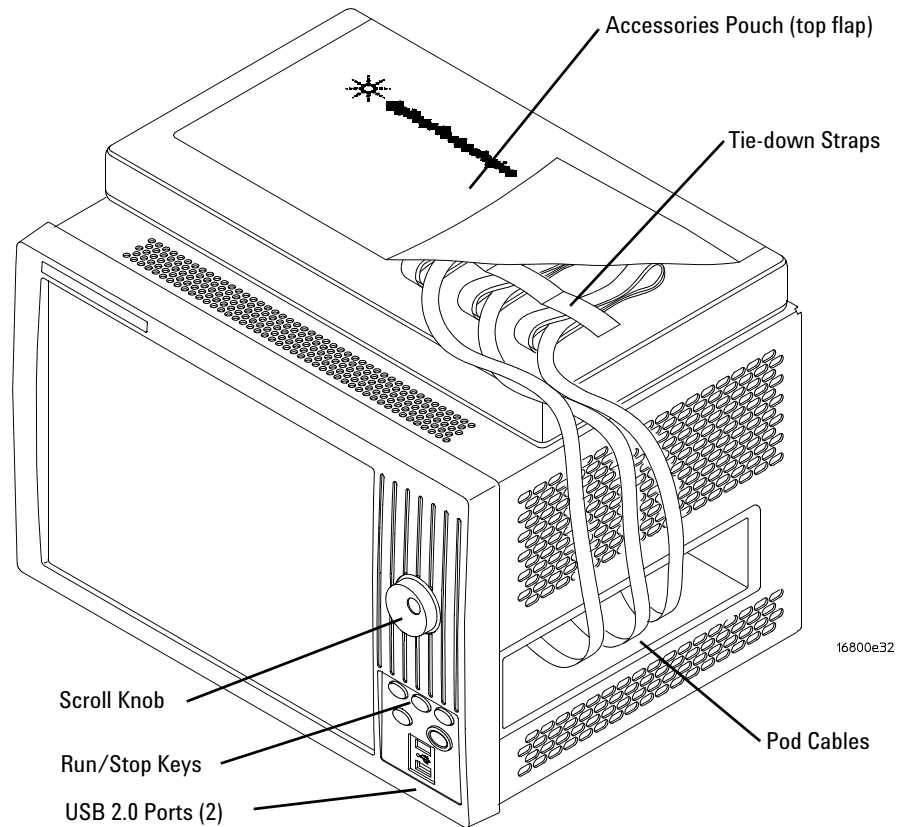


Table 1 Model comparisons

Agilent model number	16801A	16802A	16803A	16804A	16806A	16821A	16822A	16823A
Logic acquisition channels	34	68	102	136	204	34	68	102
Pattern generator channels	0	0	0	0	0	48	48	48

Features, Logic Acquisition

- 1 M to 32 M memory depth per channel (depending on memory option), software upgradeable.
- 250 MHz or 500 Mb/s maximum state data rate (depending on state speed option), software upgradeable. The 500 Mb/s maximum state data rate option is available on the 68-channel and above logic analyzer models.
- 1 GHz, 64 M deep timing analysis on half channels.
- *Eye finder* (automatic threshold and sample position setup) feature.
- 4 GHz timing zoom with 64 K memory depth.

Features, Mainframe

- Built-in 15 inch TFT color LCD display, 1,024 x 768 (XGA) resolution. Touch screen with 16800A Option 103.
- 80 GB hard disk drive (or external hard drive 16800A Option 109).
- 10/100 Base-T LAN port.
- USB 2.0 ports (six total, two on front, four on back).
- One PCI expansion slot.
- One PCI Express x1 expansion slot.
- The legacy 16800 series Logic Analyzers have the Windows XP installation. The 16800 Logic Analyzers with the serial number of MY51420101 or higher have Windows 7 installation.
- *Agilent Logic Analyzer* application which takes the complexity out of making logic analyzer measurements. You can perform all operations directly from one window.

Features, Pattern Generator

- 24 channels at 300 MHz clock; 48 channels at 180 MHz clock.
- Memory Depth: 16,777,216 vectors in half-channel mode.

- Logic Level (data pods): 5 V TTL, 3-state TTL, 3-state TTL/CMOS, 3-state 1.8 V, 3-state 2.5 V, 3-state 3.3 V, ECL, 5 V PECL, 3.3 V LVPECL, and LVDS.
- Data Inputs: 3-bit pattern level sensing (clock pod).
- Clock Output: Synchronized to output data, delay of 7 ns in 14 steps (clock pod).
- Clock Input: DC to 300 MHz (clock pod).
- Internal Clock Period: Programmable from 1 MHz to 300 MHz in 1 MHz steps.
- External Clock Period: DC to 300 MHz.
- External Clock Duty Cycle: 1.3 ns minimum high time.

Supplied Accessories

- PS2 mouse.
- PS2 keyboard.
- Accessory pouch and power cord.

Snap the accessories pouch to the top of the 16800 Series logic analyzer. Use it to store probe leads, accessories, or manuals. Use the tie-down straps under the flap to conveniently hold pod cables not in use or during transport.

Optional Accessories

- Probes.

Front Panel

Refer to the online help in the logic analyzer for information on using the analyzer.

Rear Panel

Before you turn on the system, connect your mouse and keyboard to the 16800 Series logic analyzer rear panel. If a touch screen (Option 103) is not included, a connected mouse and keyboard are required for normal system use.

In This Guide...

This guide describes how to set up, use, and update your 16800 Series logic analyzer. It also contains information on solving problems and additional safety information.

1 First-Time Set Up

This chapter describes the steps in setting up the logic analyzer for the first time.

2 Getting Started with the Logic Analyzer

This chapter describes some basic features of the logic analyzer and tells you where to find more information on using the logic analyzer.

3 Updating the Logic Analyzer

This chapter describes how to change your logic analyzer's network and Windows Firewall settings. It also describes how to get and install software updates.

4 Solving Problems

This chapter describes the logic analyzer's built-in self tests and recovering system software.

5 Safety Notices

This chapter contains additional safety information.

Contents

1	First-Time Set Up	11
	Proper Cooling	12
	First-Time Set Up Considerations	13
	Determine Whether the Instrument will be Connected to the Network	13
	Get Network Setup Information	13
	First-Time Set Up On Legacy 16800 Series Logic Analyzers With Windows XP Installation	15
	Answering Windows Welcome Questions	15
	If expected Windows Welcome questions do not appear	16
	First-Time Set Up On 16800 Series Logic Analyzers with Windows 7 Installation	18
	Additional First-Time Setup Steps	20
	Establishing an Administrator Account (recommended for standalone and networked instruments)	20
	Protecting the Instrument's Operating System	20
2	Getting Started with the Logic Analyzer	21
	Probing	22
	Making a Measurement	23
	Snap to Edge Markers	25
	Left-Click Menus	26
	Tree Structure Bus/Signal Names	26
	Offline Analysis	27
	Marker Overview	27

Contents

Tool Tips	28
Trigger History	29
To power off the system	30
Using the Windows Shutdown	30
Using a Short Press of the Power Button	30
Using a Long Press of the Power Button	31
Unplugging the Power Cord or Power Loss	31
Specifications and Characteristics	32
3 Updating the Logic Analyzer	35
Changing Network Settings	36
On Windows XP	36
On Windows 7	36
Changing Windows Firewall Settings	37
To give other applications/ports access through the firewall	37
To restore the logic analyzer firewall defaults	41
Software Installation and Upgrades	44
Agilent Logic Analyzer Software	44
Optional Products	45
4 Solving Problems	47
Running Self-Tests	48
If the logic analyzer powers itself down	49
If the Power LEDs do not come on	49
If you get a registry error and the system won't boot	49
If there are network connection problems	50
If there are touch screen problems	51
Using the System Recovery Software	54
On a Legacy 16800 Series Logic Analyzer with Windows XP Installation	54

	On a 16800 Series Logic Analyzer with Windows 7 Installation	54
	Contacting Agilent Service/Support	59
5	Safety Notices	61
	Warnings	62
	To clean the instrument	64
	Safety Symbols	65
	Index	67

Contents



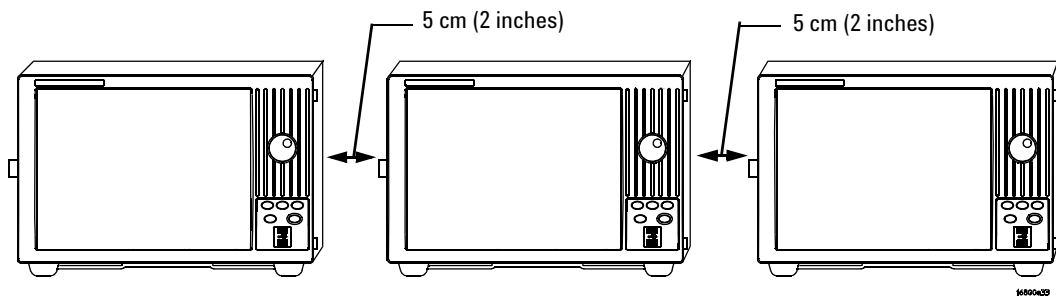
1 First-Time Set Up

Proper Cooling	12
First-Time Set Up Considerations	13
First-Time Set Up On Legacy 16800 Series Logic Analyzers With Windows XP Installation	15
First-Time Set Up On 16800 Series Logic Analyzers with Windows 7 Installation	18
Additional First-Time Setup Steps	20



Proper Cooling

Allow at least 5 cm (2 inches) of space between instruments for proper cooling.



First-Time Set Up Considerations

Determine Whether the Instrument will be Connected to the Network

NOTE

If you plan to use COM automation to programmatically control a logic analyzer from a remote computer, be aware that the remote computer and the logic analyzer must both have the same kind of network membership; that is, they must both be members of a "Workgroup", or they must both be members of a "Domain". This is due to the security requirements of Distributed COM.

Standalone

You are going to use the logic analyzer as a standalone instrument (no LAN connection). Printing requires a printer attached to the logic analyzer, sharing files is done via USB flash drive or floppy disk.

Connected to a Network

If you require the ability to print, share files, remotely control the logic analyzer, etc. over the network, you need to either join a workgroup or domain.

Get Network Setup Information

For networking, find out whether the network that your instrument will be connected to uses the Microsoft Workgroup model or Microsoft Domain model. In order for your instrument to perform tasks over the network (print, transfer files, etc.) your instrument must be configured appropriately for the networking model in use at your site.

Information you may require to complete your network configuration may include, but is not limited to:

- The Workgroup or Domain name.

1 First-Time Set Up

- Methodology for assigning IP addresses at your site (for example, DHCP).
- Domain Name Service (DNS).

Other network information that may be readily available from your network administrator.

First-Time Set Up On Legacy 16800 Series Logic Analyzers With Windows XP Installation

The legacy 16800 series logic analyzers are shipped with Windows XP installation. The first time you turn on these logic analyzers, the Windows® Welcome session starts. Your logic analyzer configuration and the answers to the Windows Welcome questions are affected by how you choose to use the logic analyzer.

NOTE

Use the Enter and arrow keys on the attached keyboard.

Answering Windows Welcome Questions

Once you have determined how you want to use your logic analyzer and your network configuration, power up your logic analyzer and answer the Windows Welcome questions.

Table 2 Answering Windows Welcome Questions

	Standalone (No LAN)	Workgroup	Domain
Help protect your PC	N/A	Choose "Help protect my PC by turning on Automatic Updates now".	Choose "Help protect my PC by turning on Automatic Updates now".
What's your computer's name? (After answering, wait several minutes for next question to appear)	If your organization has a standard naming scheme, use that scheme. Otherwise, choose a descriptive name that follows the suggestions on the screen (less than 15 characters, etc.)		
What's your administrator password?	Agilent recommends entering an administrator password for administrator accounts. See page 20 for actions that require administrator accounts.		
Is this computer in a domain?	No (Is given WORKGROUP membership)	No (Is given WORKGROUP membership)	Yes Enter the domain name the logic analyzer will log onto.

1 First-Time Set Up

Table 2 Answering Windows Welcome Questions (continued)

	Standalone (No LAN)	Workgroup	Domain
Enter your domain settings.	N/A	N/A	Enter the name/password of a user who can add the logic analyzer to the domain.
Checking your Internet connectivity	Press 'Skip'	Wait for this to finish.	Wait for this to finish.
How will this computer connect to the Internet?	N/A	N/A	Choose the appropriate answer.
Setting up a high-speed connection?	N/A	N/A	Enter either the fixed IP/DNS assigned by your network administrator or select "Obtain Automatically".
(If LAN connected) Will this computer connect to the Internet directly, or through a network?	N/A	Choose "Yes, through a network" (Agilent does not support connecting to the internet through a modem directly connected to the logic analyzer.)	N/A
(If LAN is not connected) Windows unable to determine LAN connectivity.	N/A	You are told to set up LAN later.	N/A
Ready to register with Microsoft	The legacy 16900 series of Logic Analysis systems have Windows XP already enabled to run. This registration is to allow Microsoft to contact you.		
Who will use this computer?	For All: Entering names here lets multiple users use the logic analyzer with administrator permissions. By default their passwords will be blank.		

If expected Windows Welcome questions do not appear

During first-time power-up, depending on the configuration of your network, some of the Windows Welcome questions that should appear, like "Is this computer in a domain?", may not appear.

If this occurs, you need to change the logic analyzer's network setup (after the first-time power up) using the normal Windows XP methods (see ["Changing Network Settings"](#) on page 36).

First-Time Set Up On 16800 Series Logic Analyzers with Windows 7 Installation

The first time you turn on a 16800 series logic analyzer that is shipped with Windows 7 installation, you are automatically logged on to the system using the Administrator account and the Windows 7 desktop is displayed.

Unlike legacy 16800 series logic analyzers, the Windows Welcome questions are not displayed for setting logic analyzer configurations on these new 16800 logic analyzers the first time you turn these on. However, once you are logged on to the system, you must set the following logic analyzer configurations based on how you want to use your logic analyzer. You use the standard Windows 7 procedures to set these configurations.

Table 3 Logic Analyzer Configurations on a 16800 Series Logic Analyzer with Windows 7 Installation

Configuration Task	Logic Analyzer Usage		
	Standalone (No LAN)	Workgroup	Domain
Protect your instrument's PC	N/A	Turn on Automatic Updates	Turn on Automatic Updates
Specify computer name	If your organization has a standard naming scheme, use that scheme. Otherwise, choose a descriptive name (less than 15 characters)		
Specify the administrator password	Agilent recommends entering an administrator password for administrator accounts. See page 20 for actions that require administrator accounts.		
Specify the domain name (if applicable)	No (Is given WORKGROUP membership)	No (Is given WORKGROUP membership)	Yes Enter the domain name the logic analyzer will log onto.
Enter your domain settings.	N/A	N/A	Enter the name/password of the user who can add the logic analyzer to the domain.
Configure connectivity to the Internet	N/A	N/A	Choose the appropriate Internet connectivity.

Configuration Task	Logic Analyzer Usage		
	Standalone (No LAN)	Workgroup	Domain
Set up a high-speed connection	N/A	N/A	Enter either the fixed IP/DNS assigned by your network administrator or select "Obtain Automatically".
Determine if you want to connect the instrument's PC to the Internet directly or through a network.	N/A	Agilent does not support connecting to the Internet through a modem directly connected to the logic analyzer.	N/A
Register with Microsoft	The 16800 series of Logic Analysis systems with serial number of MY51420101 or higher have the Windows 7 operating system already enabled to run. This registration is to allow Microsoft to contact you.		
Specify users for the instrument's PC	You can add multiple users with administrator permissions to allow these users to use the logic analyzer.		

Additional First-Time Setup Steps

Establishing an Administrator Account (recommended for standalone and networked instruments)

Agilent recommends that you set up an Administrator account for your logic analyzer. You have to be logged in to the Administrator account to do the following:

- Install most software (applies whether the instrument is networked or standalone).
- Change the workgroup.
- Perform "Windows Updates".
- Change firewall settings.

Protecting the Instrument's Operating System

Microsoft recommends the following three steps to ensure the instrument's PC is protected.

- 1 Use an internet firewall.
- 2 Get operating system updates.
- 3 Use up-to-date antivirus software.



2 Getting Started with the Logic Analyzer

Probing	22
Making a Measurement	23
Snap to Edge Markers	25
Left-Click Menus	26
Tree Structure Bus/Signal Names	26
Offline Analysis	27
Marker Overview	27
Tool Tips	28
Trigger History	29
Specifications and Characteristics	32



Probing

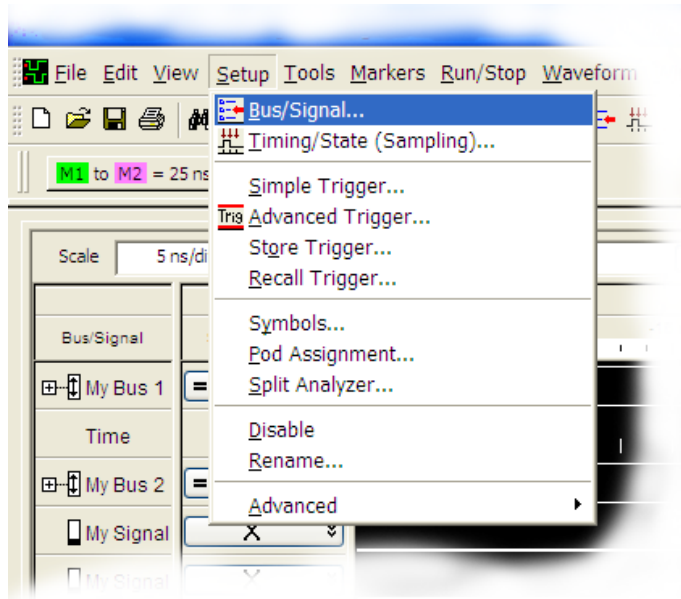
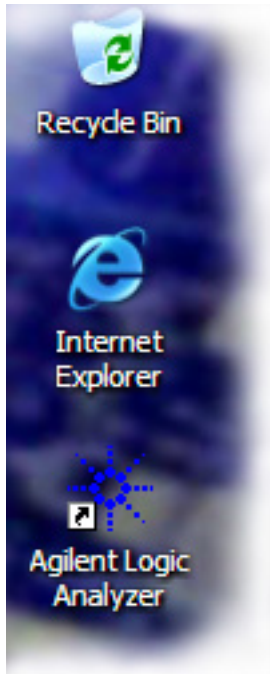
Probing is the key to effective and efficient use of logic analyzers. Agilent Technologies offers a wide variety of probing accessories that support general-purpose and application-specific measurement needs. We provide reliable, electrically and mechanically unobtrusive probes that make it easy to connect your Agilent logic analyzer to your system under test. For more information on Agilent probes:

- See the quick reference card that came with your logic analyzer for an overview of probing solutions.
- Go to www.agilent.com/find/logic_analyzer_probes for the most up-to-date information on probe compatibility with a given logic analyzer and purchasing information.
- Go to www.agilent.com and search for *Probing Solutions for Logic Analysis Systems* (publication 5968-4632E) for a catalog of detailed probing information.

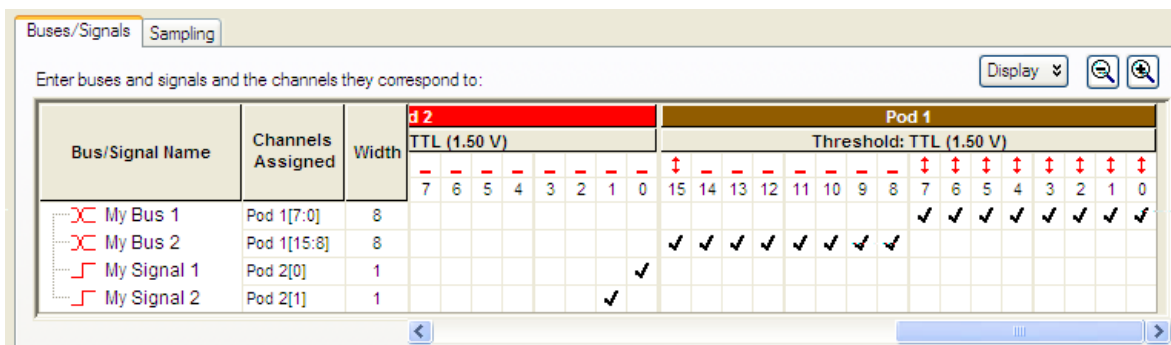
To connect and set up a probe, follow the instructions in the *User's Guide* that came with the probe.

Making a Measurement

- 1 Start up the logic analyzer, connect to your target system, and select **Setup>Bus/Signal**.

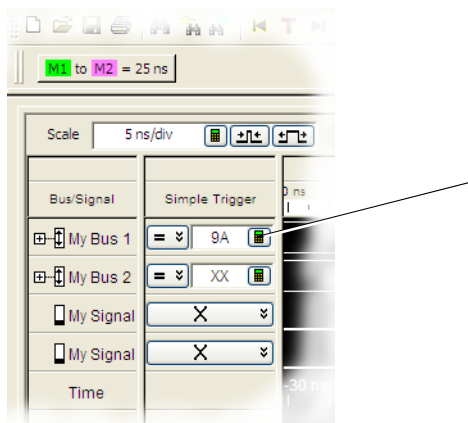


- 2 Assign buses and signals and click OK.

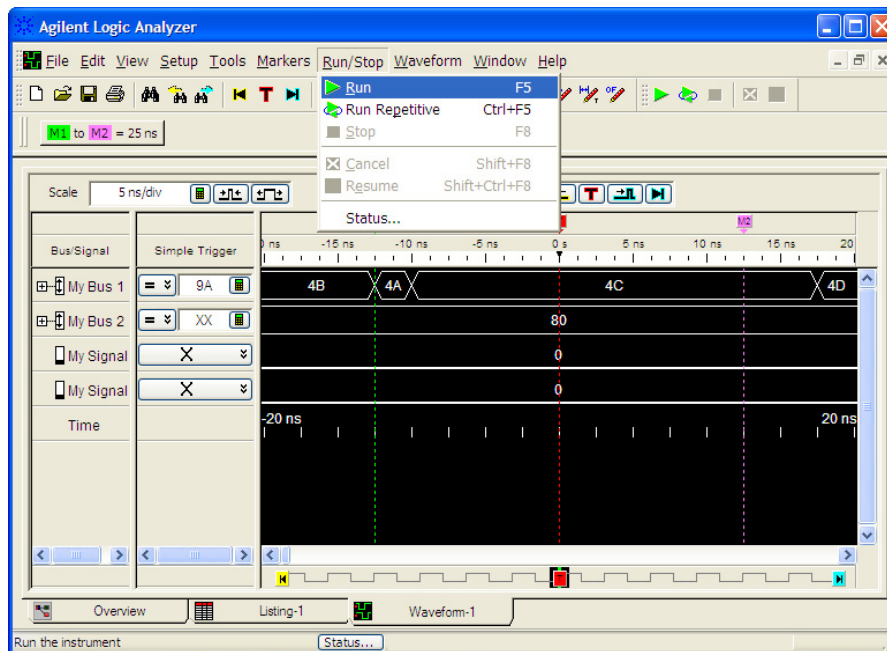


2 Getting Started with the Logic Analyzer

3 Enter a trigger value.

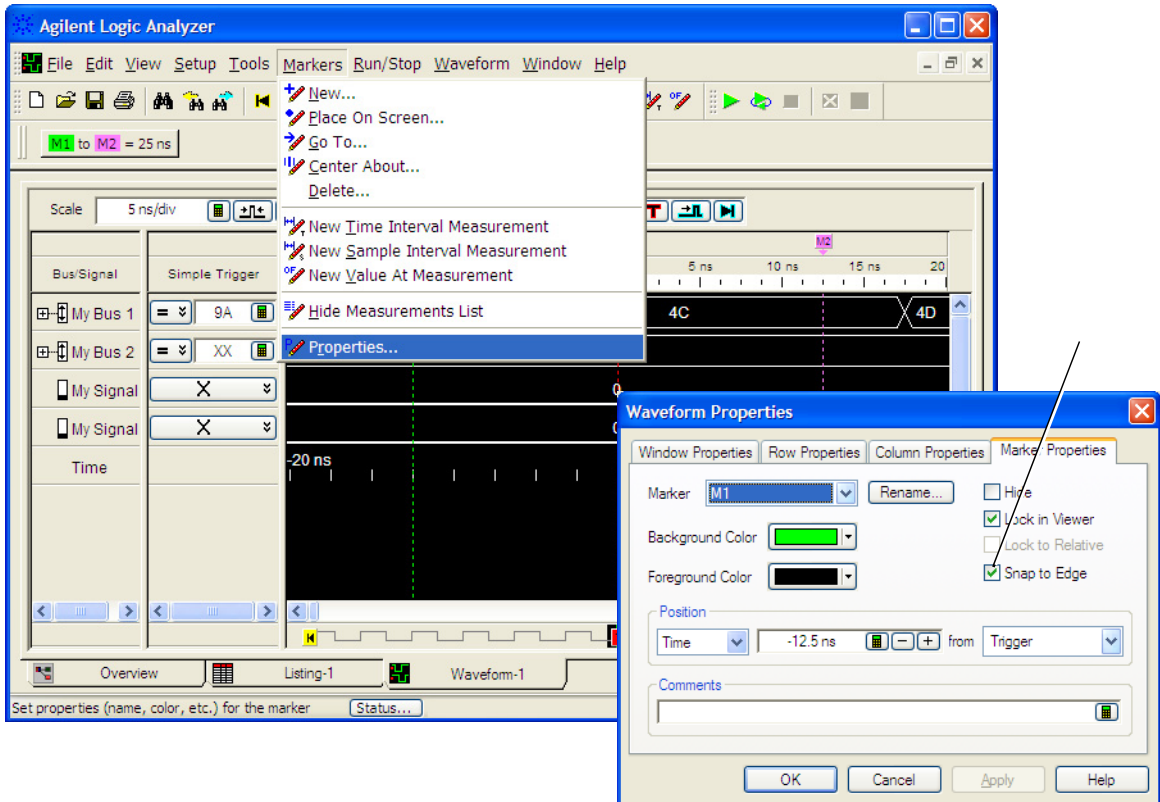


4 Acquire and view data.



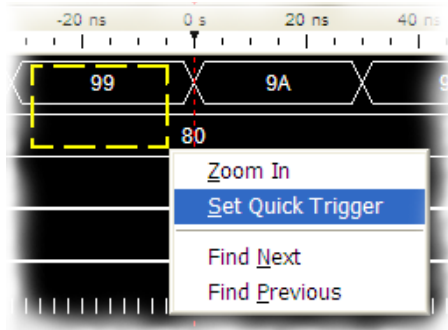
Snap to Edge Markers

You can set the markers to jump to the nearest edge of a waveform. A yellow target will show which edge the marker will jump to.



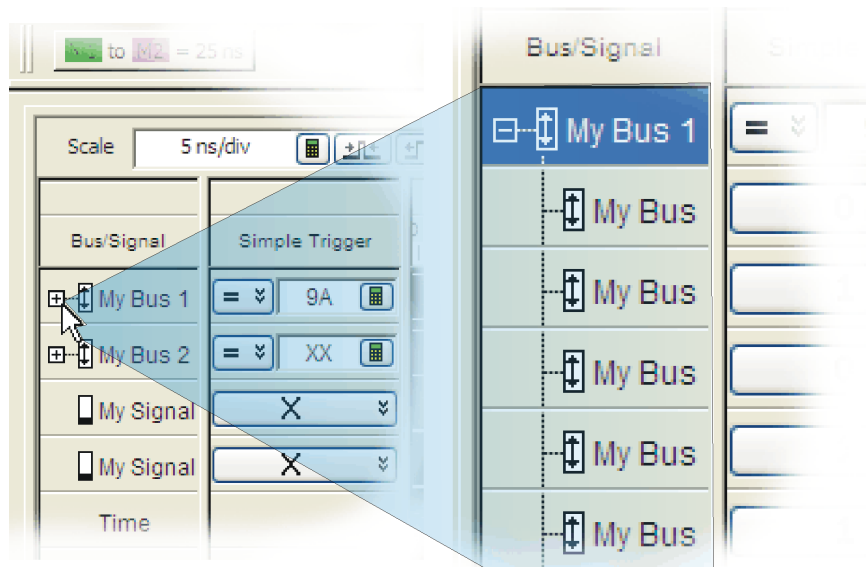
Left-Click Menus

Drag a box around parts of the data. When you release the mouse button, a menu appears.



Tree Structure Bus/Signal Names

Show individual signals in buses by clicking on the + to expand.



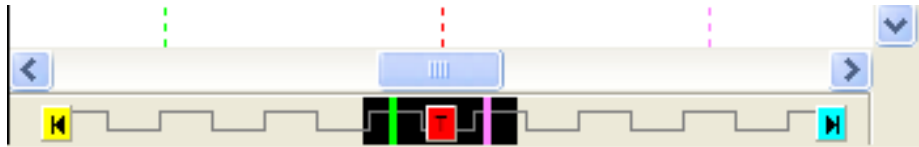
Offline Analysis

Install the *Agilent Logic Analyzer* application on another Windows XP, Windows 7, or Windows 2000 computer and you can analyze data without the 16800 Series logic analyzer.

- 1 Follow the instructions in “[Software Installation and Upgrades](#)” on page 44 to load the 16800 Series logic analyzer software on your PC.
- 2 Acquire a trace with the logic analyzer.
- 3 Save a configuration file with data.
- 4 Copy the file to the PC being used for offline analysis.
- 5 From the *Agilent Logic Analyzer* application software on your PC, open the configuration file.

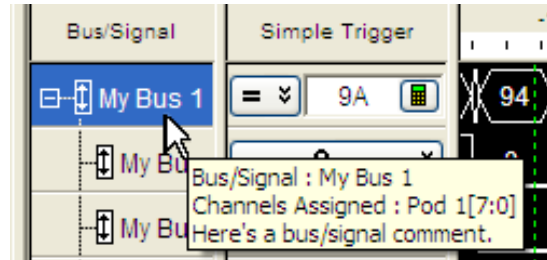
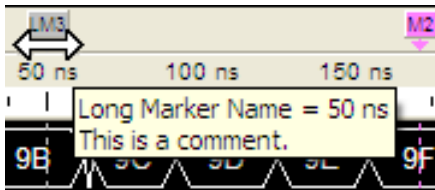
Marker Overview

The marker overview display shows marker locations within the data and the part of data currently being displayed.



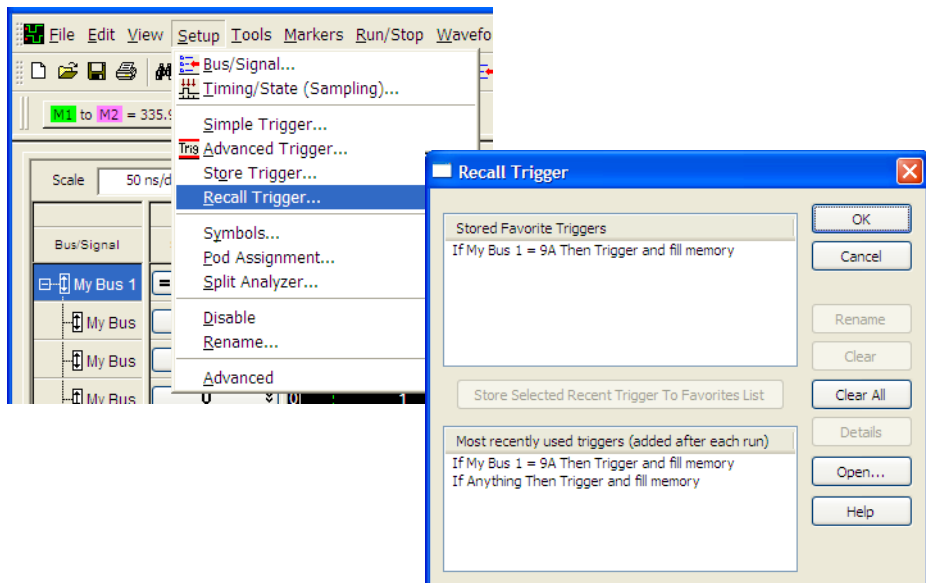
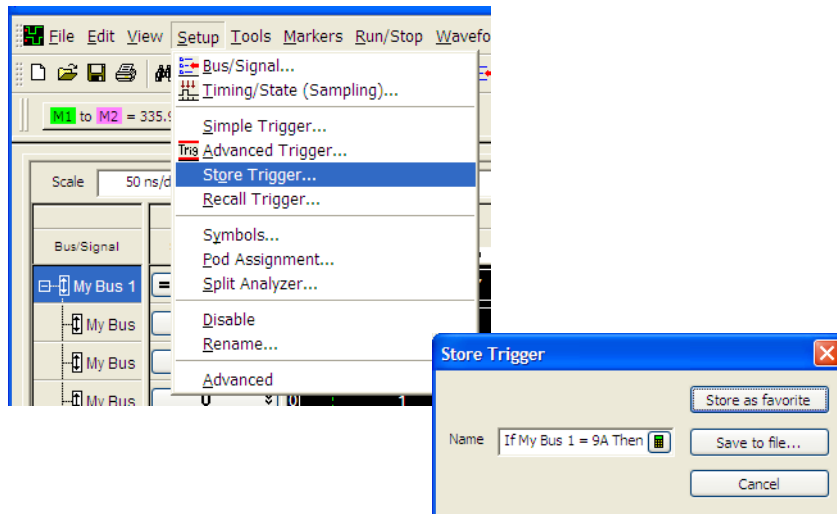
Tool Tips

Pause the cursor over a tool Icon and a “Tool Tip Window” will appear.



Trigger History

Save and recall trigger settings.



To power off the system

You can power off the logic analyzer using Windows Shutdown or a short press of the power button.

NOTE

When powering off the logic analyzer, wait until the fans stop turning (about 15 seconds) before turning the logic analyzer back on. This ensures that internal circuitry restarts in a known state.

Using the Windows Shutdown

On the logic analyzer desktop click **Start>Shut Down** or if you are running remote desktop, click **Start>Windows Security>Shut Down**. This:

- Closes all programs that are running.
- Writes all data to the disk.
- Turns off the power supply.
- If the system is unplugged while it is off and then plugged back in, the system will not power on until the power button is pressed.

Using a Short Press of the Power Button

Pressing the power button on the logic analyzer for a short time (less than 2 seconds):

- Closes all programs that are running.
- Writes all data to the disk.
- Turns off the power supply.

If the power button on the Remote Desktop is depressed for a short time (less than 2 seconds or so), a message on the logic analyzer screen (not on the remote desktop) will pop up asking if you really want to power down. Clicking the 'yes' button results in the above events. Clicking 'no' will prevent the shutdown. Not answering the dialog box (clicking neither "Yes" nor "No") will have no effect. Further short presses on the power button will have no effect.

Using a Long Press of the Power Button

CAUTION

Only use a long press of the power button when the logic analyzer is unresponsive to Windows Shutdown or a short press of the power button.

Pressing the power button for more than 4 seconds will power the system down abruptly:

- Programs that are running will not be shut down. Any data that has not been written to the disk will be lost.
- Turns off the power supply.
- If the system is unplugged while it is off and then plugged back in, the system will not power on until the power button is pressed

Unplugging the Power Cord or Power Loss

CAUTION

Only unplug the power cord when the logic analyzer is unresponsive to all other methods for powering off the system.

Unplugging power or a power loss is similar to the long press of the power button with one exception:

- When the system is plugged back in, it will power up and boot into Windows.

Specifications and Characteristics

The following electrical and operating characteristics are not specifications, but are typical operating characteristics for the Agilent 16800 Series logic analyzers.

Electrical Characteristics

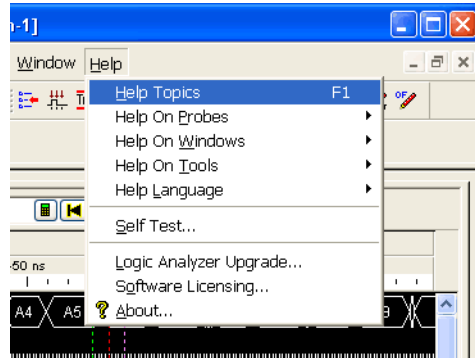
Power Requirements	16801A, 16802A, and 16803A: 115/230 Vac +/- 20%, 48-66Hz, 615W Max. 16804A, 16806A, 16821A, 16822A, and 16823A: 115/230 Vac +/- 20%, 48-66Hz, 775W Max. CAT II (Line voltage in appliance and to wall outlet). Pollution degree 2.
---------------------------	---

Environmental Characteristics (Operating)

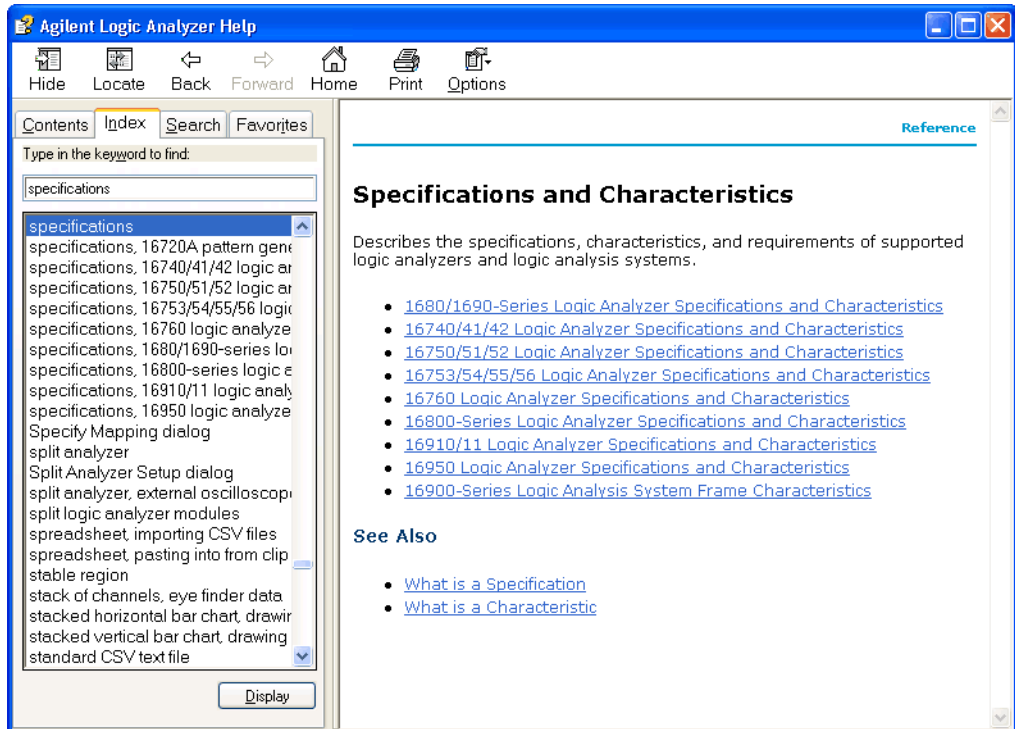
Temperature	Instrument: 0° to + 50° C (+32° to +122° F). Probes/cables: 0° to + 65° C (+32° to +149° F).
Altitude	3,000 m (10,000 ft).
Humidity	Relative humidity 8 to 80% at 40° C (104° F). Avoid sudden, extreme temperature changes which could cause condensation on the circuit board. For indoor use only.

More specifications and characteristics for your instrument and measurement modules are in the on-line help. To find them go to:

1 Click Help>Help Topics.



2 Click Reference; then, click Specifications and Characteristics.



2 Getting Started with the Logic Analyzer



3 Updating the Logic Analyzer

Changing Network Settings 36

Changing Windows Firewall Settings 37

Software Installation and Upgrades 44



Changing Network Settings

To make network changes after the first-time power up:

On Windows XP

The following steps are applicable for a logic analysis system with Windows XP operating system:

- To change from a workgroup to a domain or vice versa, click **Start** then right-click on **My Computer** and select **Properties**. Select the **Computer Name** tab and click **Change**.
- To change network connection properties, click **Start>Control Panel>Network Connections**. Select the connection you want to change and click **Change settings of this connection**.

For more information on changing network settings, refer to the Windows XP online help.

On Windows 7

The following steps are applicable for a logic analysis system with Windows 7 operating system:

- To change from a workgroup to a domain or vice versa, click **Computer** and select **Properties**. Click the **Change Settings** link in the **Computer name, domain and workgroup settings** section. Then select the **Computer Name** tab and click **Change**.
- To change network connection properties, click **Start>Control Panel>Network and Sharing Center**. Select the connection you want to change and then set the properties of this connection.

For more information on changing network settings, refer to the Windows 7 online help.

Changing Windows Firewall Settings

When 16800 Series logic analyzers are shipped from the factory, the Windows Firewall is enabled and set up with the exceptions required by the logic analyzer.

To give other applications/ports access through the firewall

For example, you may need to change firewall settings in order to:

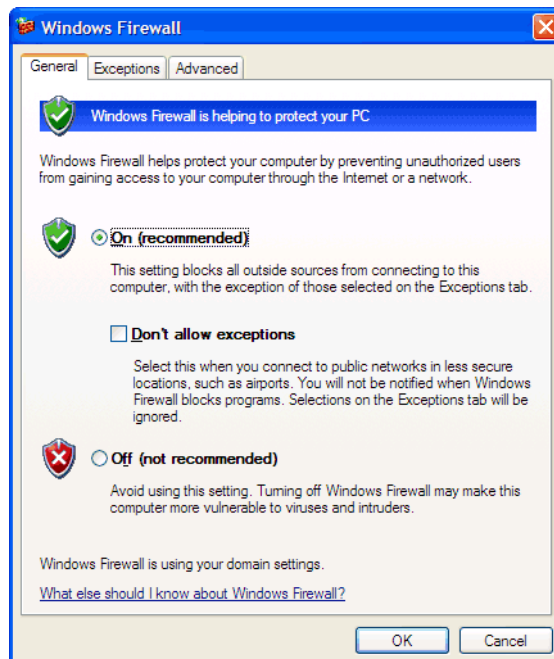
- Use NetOp to remotely control the logic analyzer.
- Use RealVNC to remotely control the logic analyzer.

On Windows XP

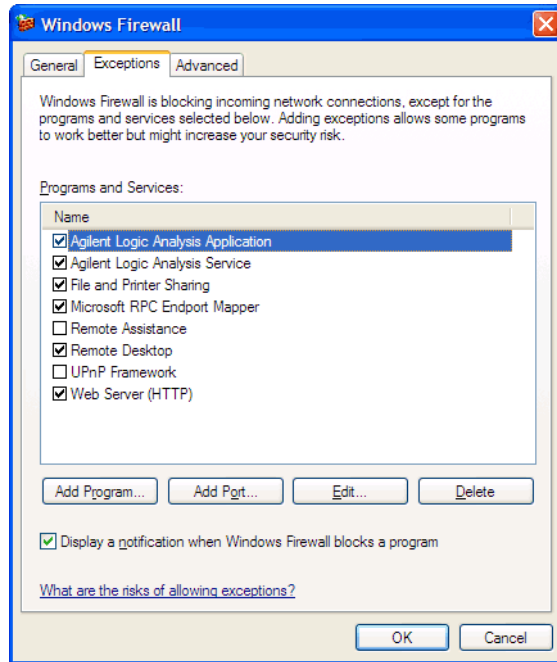
To change firewall settings to give other applications/ports access:

- 1** From the Windows Start menu, choose **Start>Control Panel**.
- 2** In the Control Panel window, open **Windows Firewall**.

3 Updating the Logic Analyzer



- 3 In the Windows Firewall dialog, click the **Exceptions** tab.



- 4 In the Exceptions tab, if the required program or service is listed, check its box to enable it; otherwise, click **Add Program...** to give unlisted applications permission to penetrate the firewall, or click **Add Port...** to give unlisted ports access through the firewall.

Refer to the application's documentation for information on port numbers or other firewall setup information.

On Windows 7

To change firewall settings on Windows 7 to give other applications/ports access:

- 1 From the Windows Start menu, choose **Start>Control Panel**.
- 2 In the Control Panel window, click **Windows Firewall**.
- 3 Click the **Allow a program or a feature through Windows firewall** link.

3 Updating the Logic Analyzer

- 4 The list of allowed programs and features is displayed. If the required program or service is listed, check its box to enable it; otherwise, click **Allow another program...** to give unlisted programs permission to penetrate the firewall.

Refer to the application's documentation for more information on port numbers or other firewall setup information.

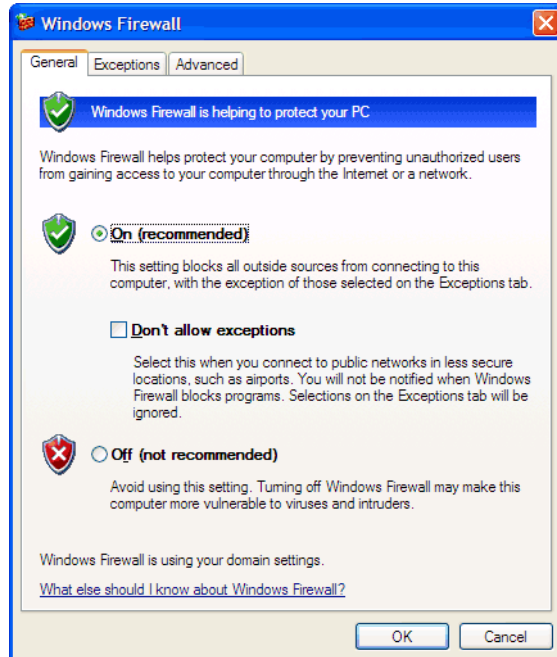
NOTE

Note that there are separate Windows Firewall profiles: Domain for when the computer has domain membership, and Standard for when the computer has workgroup membership. If you change the type of membership, any changes you made to the Windows Firewall settings will have to be made again.

To restore the logic analyzer firewall defaults

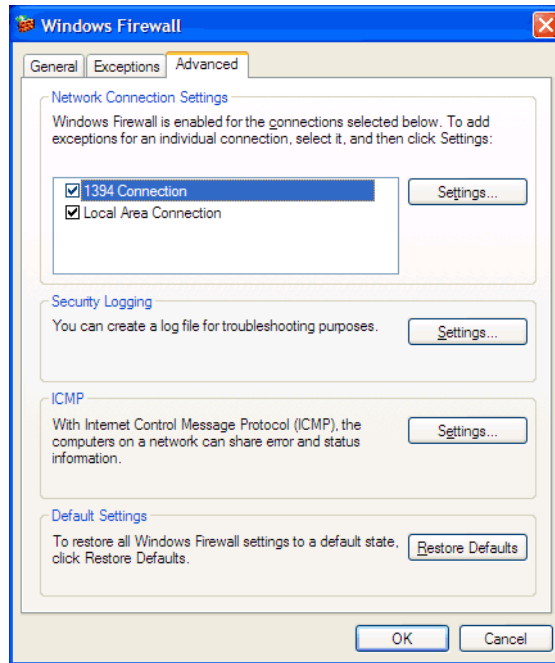
On legacy 16800 logic analyzers

- 1 From the Windows Start menu, choose **Start>Control Panel**.
- 2 In the Control Panel window, open **Windows Firewall**.



3 Updating the Logic Analyzer

- 3 In the Windows Firewall dialog, click the **Advanced** tab.



- 4 In the Advanced tab, click **Restore Defaults** to restore the default Windows Firewall settings.
- 5 In the confirmation dialog, click **Yes**.
- 6 Click **OK** to close the Windows Firewall dialog.
- 7 From the Windows Start menu, choose **Start>Run**; then, enter or select the file “C:\Program Files\Agilent Technologies\Logic Analyzer\agFirewSP2.wsf”, and click **OK**.

On newer/current 16800 logic analyzers with 5.10 or later version of Logic Analyzer software

If your 16800 Logic Analyzer has 5.10 or later version of Logic Analyzer software and Windows XP installation, then restore the firewall defaults by following the steps 1 to 6 in the procedure described in previous section. After that, uninstall and then reinstall the Logic Analyzer software from www.agilent.com/find/la-sw-download.

If your 16800 Logic Analyzer has 5.20 or later version of Logic Analyzer software and Windows 7 installation, then restore the firewall defaults by performing the following steps:

- 1 From the Windows Start menu, choose **Start>Control Panel**.
- 2 Click the **Windows Firewall** link.
- 3 Click **Restore defaults** in the left pane of the window.
- 4 Again click **Restore defaults**.
- 5 Uninstall and then reinstall the Logic Analyzer software from www.agilent.com/find/la-sw-download.

The logic analyzer firewall defaults enable the following exceptions:

- Agilent Logic Analysis Application program.
- Agilent Logic Analysis Service program.
- File and Printer Sharing.
- Microsoft RPC Endpoint Mapper TCP port.
- Remote Desktop service.
- Web Server (HTTP) port.

The logic analyzer firewall defaults also enable the following ICMP (Internet Control Message Protocol) settings:

- Allow incoming echo request.
- Allow outgoing destination unreachable.
- Allow outgoing time exceeded.

NOTE

Note that there are separate Windows Firewall profiles: Domain for when the computer has domain membership, and Standard for when the computer has workgroup membership. When you restore the logic analyzer firewall defaults, the defaults for both profiles are restored.

Software Installation and Upgrades

Agilent Logic Analyzer Software

The Agilent 16800 Series logic analyzers are shipped with software already installed, including any licensed optional products that you may have purchased. The licensing process (described below) has been performed and the (*.lic) license file is in place.

To upgrade/reinstall the logic analyzer software or to install the logic analyzer software onto your PC for offline processing:

- On legacy 16800 series logic analyzers that were shipped with an application CD, attach a USB CD-ROM drive. Then insert the application CD and click INSTALL PRODUCTS>Install Logic Analyzer. To install the logic analyzer software onto your PC for offline processing, insert the application CD into your PC's CD-ROM drive, click INSTALL PRODUCTS>Install Logic Analyzer. Alternatively, you can also download and install the Logic analyzer software from www.agilent.com/find/la-sw-download.
- On 16800 series logic analyzers with serial number of MY51420101 or higher and Windows 7 operating system, download the Logic analysis system software from <http://www.agilent.com/find/la-sw-download> and then install the software using the downloaded file. These systems are not shipped with an application CD. You need the Agilent Logic Analyzer software version 5.20 or later for these systems.

Note that newer versions of the Agilent Logic Analyzer software will automatically uninstall the previous version as a step in the upgrade. (User files in the "Documents and Settings" tree are not affected.)

To be notified when software upgrades are available for downloading from the web, please sign up for e-mail notifications at:

www.agilent.com/find/emailupdates

Optional Products

If applicable, follow the instructions on the entitlement certificate that came with your purchase to enable the optional tool.

3 Updating the Logic Analyzer



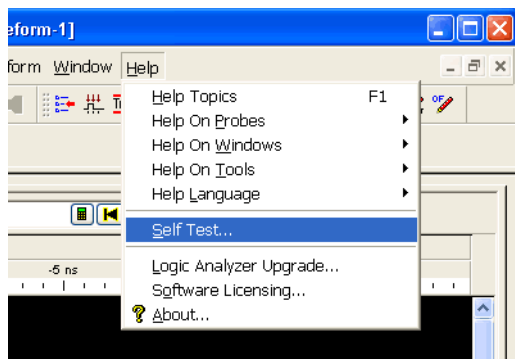
4 Solving Problems

Running Self-Tests	48
If the logic analyzer powers itself down	49
If the Power LEDs do not come on	49
If you get a registry error and the system won't boot	49
If there are network connection problems	50
If there are touch screen problems	51
Using the System Recovery Software	54
Contacting Agilent Service/Support	59

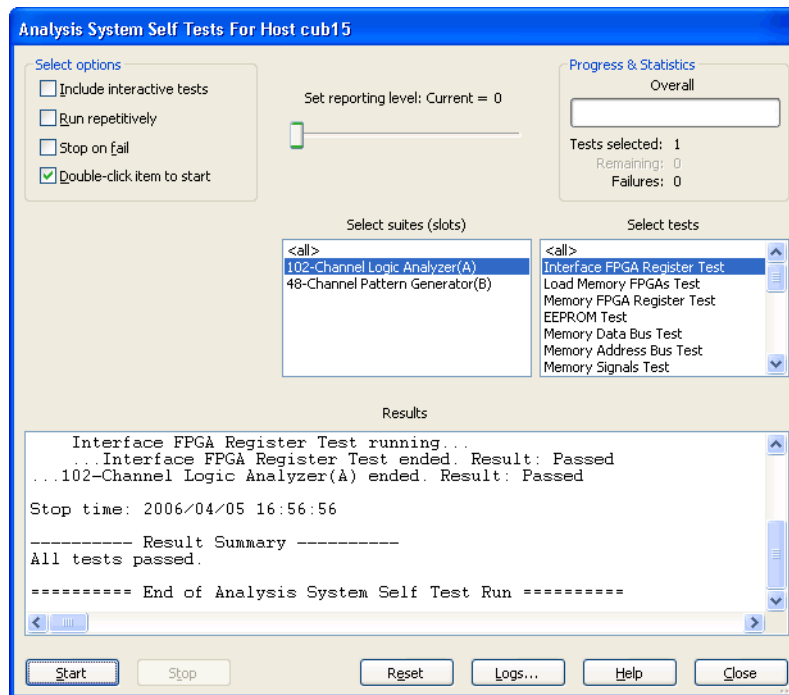


Running Self-Tests

- 1 In the Agilent logic analyzer application, click **Help>Self Test**.



- 2 In the analysis system Self Test dialog, double click on the test you want to run.



If the logic analyzer powers itself down

If the logic analyzer warns you it is powering down before it powers down, the dialog will describe the problem (such as a fan/overtemp problem). If the logic analyzer just powers down, it is likely a power supply problem.

If the Power LEDs do not come on

If the lights do not come on and if the system powers up momentarily when you plug it in, make sure the power button hasn't become jammed or stuck in the pushed in position.

If you get a registry error and the system won't boot

When powered off unexpectedly (for example, with a long press of the power button or a power loss), Windows may not flush all system information to disk and is vulnerable to problems. When you power back on you may get a "Registry Error" and the system won't boot. If this happens you will need to restore from the system CD-ROM. In the Logic Analysis systems with Windows 7 installation, you can restore the system software using the recovery process. This process overwrites all the user data and restores the system back to the original condition in which it was shipped. Refer to the topic [“On a 16800 Series Logic Analyzer with Windows 7 Installation”](#) on page 54 to know more about this process.

It is best to keep regular backups of your data and use proper power down procedures. If you have data that was not backed up that you need to try to save:

- 1 Physically remove the disk drive.
- 2 Mount it under another Windows XP/7 system based on which operating system is installed on the Logic Analysis system.
- 3 Move the data to the boot disk until you can restore the operating system.

If there are network connection problems

See the “Network Troubleshooting Guide” topic in the *Agilent Logic Analyzer* application’s online help. Briefly:

- The Windows Firewall must be set to allow access to the “Agilent Logic Analysis” service in order use remote connections (see [“To restore the logic analyzer firewall defaults”](#) on page 41).
- The Windows Firewall must be set to respond to the following ICMP (Internet Control Message Protocol) requests in order to use remote connections:
 - Allow incoming echo requests.
 - Allow outgoing destination unreachable.
 - Allow outgoing time exceeded.

(See [“To restore the logic analyzer firewall defaults”](#) on page 41.)

- The link activity light must be on; If these LEDs are not on, the LAN segment may be dead.
- If connecting two logic analysis systems directly together (that is, no hub or switch between them), make sure you are using a special cross-over cable.

If your IP address is in the same subnet as a working computer’s (use `ipconfig /all | more` to view IP addresses on machine in question), it is possible that your network administrators have denied access to any resources if the computer is not in the domain. In this case, you need to add the computer (logic analysis system) to the domain.

If there are touch screen problems

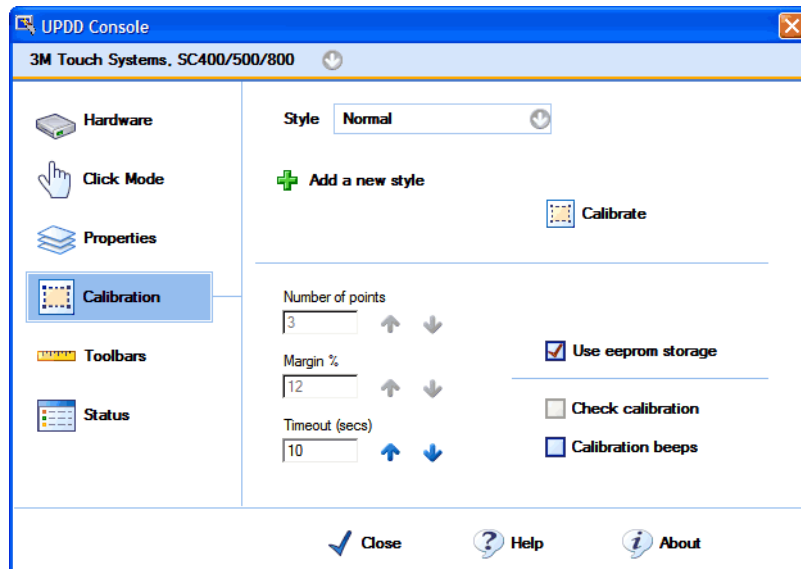
If you observe the following touch screen problems:

- If the Touch Off button on the instrument's front panel doesn't work.
- If there are problems with the right-click functionality on the touch screen.
- If the accuracy of touch locations is off.

You may be able to calibrate the touch screen to fix the problem by following the procedures described below for legacy and newer 16800 series of logic analyzers.

On legacy 16800 series logic analyzers:

- 1 From the Windows Start menu, choose **Start>All Programs>Agilent Logic Analyzer>Utilities>Touch Screen >Settings**.
- 2 In the UPDD Console dialog, select the Calibration settings area.

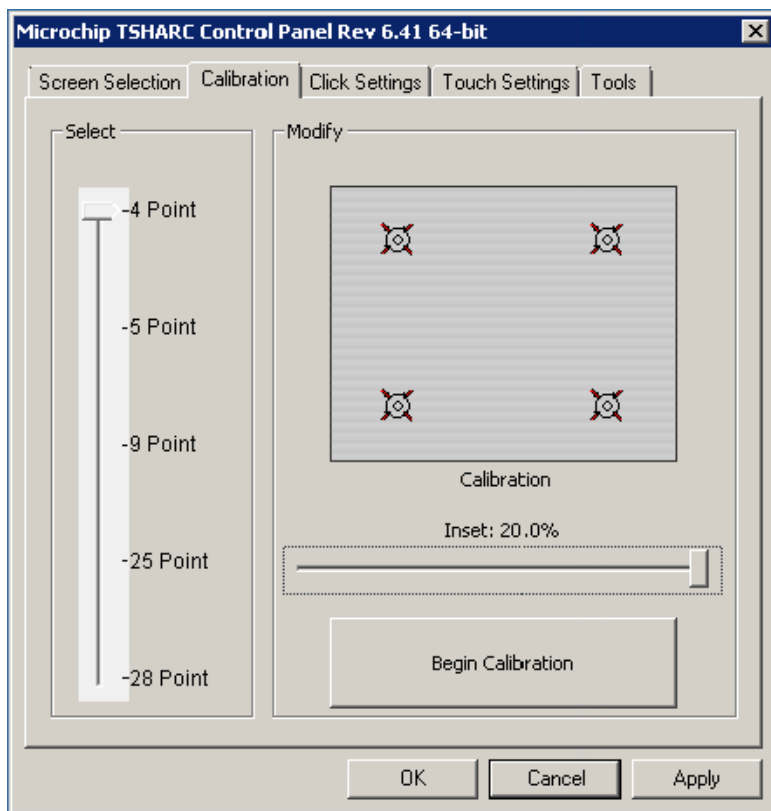


- 3 Make sure that **Number of points** is set to 3 and that **Use EEPROM storage** is checked; then, click **Calibrate**.

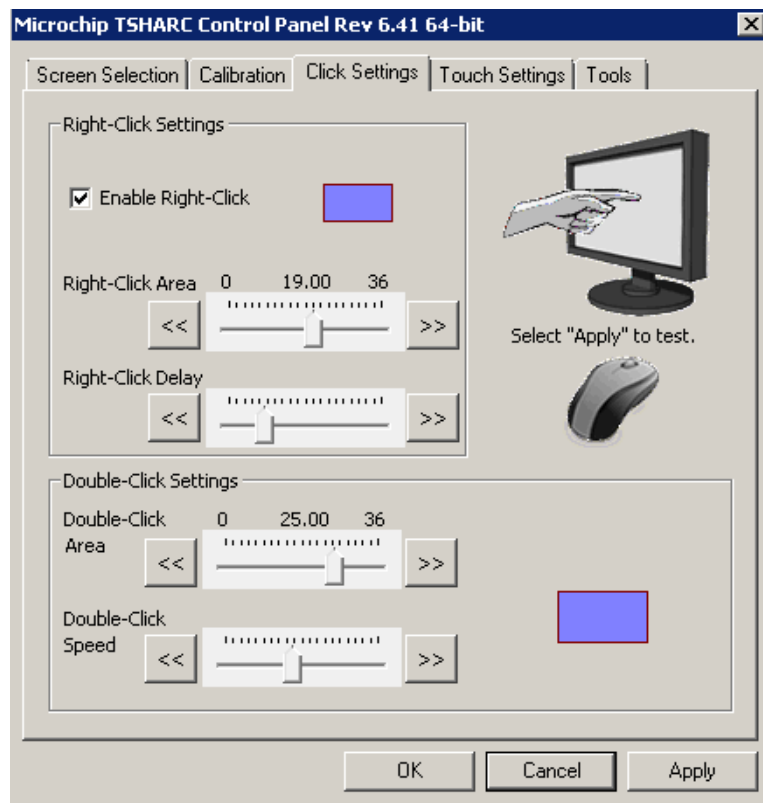
4 Solving Problems

On newer/current 16800 series logic analyzers:

- 1 From the Windows Start menu, choose **Start>All Programs>Agilent Logic Analyzer>Utilities>Touch Screen>Calibration and Settings**.
- 2 In the Microchip TSHARC Control Panel dialog, select the **Calibration** tab.



- 3 By default, the number of points is set to 4 and the Inset is set at 20.0%.
- 4 Click **Begin Calibration**.
- 5 If you want to enable the right-click functionality on the touch screen, select the **Click Settings** tab and then select the **Enable Right-Click** checkbox. You can also set the area on the touch screen on which you want to enable the right-click functionality.



If calibrating the touch screen doesn't fix the problem, see [“Contacting Agilent Service/Support”](#) on page 59.

Using the System Recovery Software

Restoring your system software might be necessary for the following reasons:

- Hard drive failure.
- Virus in the system or unstable system.
- Intentional disk clean - for example if you are passing the system to another team or returning it to a rental company and you do not want any data left on it.

On a Legacy 16800 Series Logic Analyzer with Windows XP Installation

The legacy 16800 series of Logic Analyzers have the Windows XP operating system installed. These systems also have the Agilent Logic Analyzer software preinstalled.

You need to have a keyboard, mouse, and USB DVD-ROM drive connected.

Follow the instructions provided with the recovery CD or DVD that accompanies your Logic Analyzer to restore your system software.

CAUTION

Running the recovery disks will reformat your hard drive. All data files and programs will be overwritten. Save your data to a CD or to another machine before performing this procedure.

On a 16800 Series Logic Analyzer with Windows 7 Installation

The 16800 series of Logic Analyzers with serial number of MY51420101 or higher have the Windows 7 operating system installed. These systems also have the Agilent Logic Analyzer software version 5.20 or later preinstalled. These systems do not have any recovery CD or DVD in their shipment.

If you need to restore the logic analysis system software, you run the recovery process on the hard drive of the system. This recovery process uses the hidden partition on the hard drive to restore the hard disk drive back to its original state in which it was shipped. When you run this process, the recovered hard disk drive contains:

- the Windows 7 operating system

- the version of the Logic Analyzer software which was installed when the system was originally shipped and not the latest or upgraded version of the software that might be available at the time of system recovery.
- the license files of any licensed optional products that you had purchased with the Logic Analyzer and that were installed when the system was originally shipped.

NOTE

When you run the recovery process, the software licensing Host ID of your logic analyzer may change. If this happens, the restored license files will not work with the new host ID and you will need rehosted license files. To get these files, you can contact your nearest Agilent sales/service office. To locate a sales or service office, go to www.agilent.com/find/contactus.

CAUTION

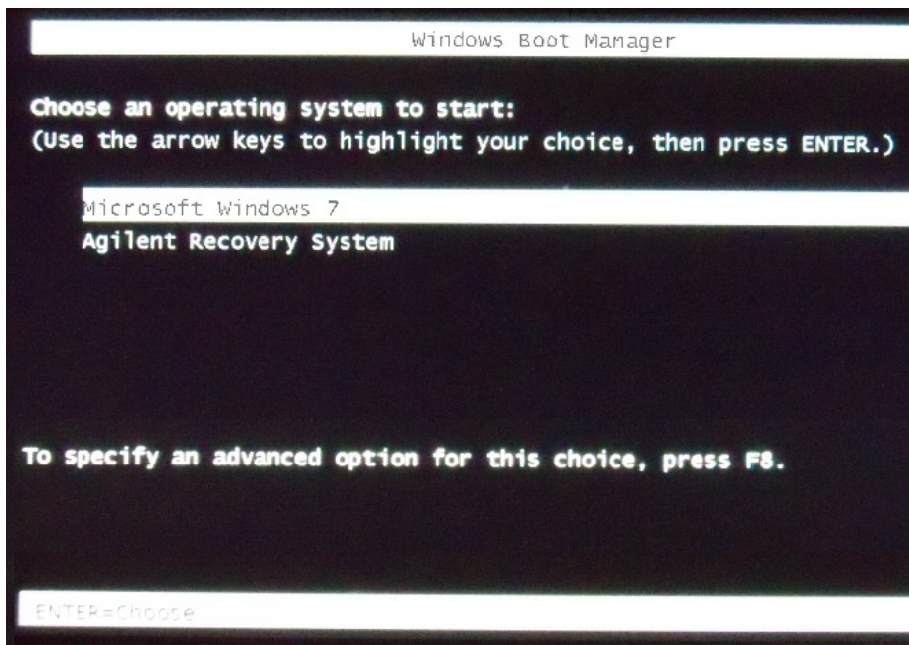
Running the recovery process reformats your logic analyzer's hard disk drive to the state in which it was originally shipped to you. All user data files and programs are overwritten when the recovery process runs. Therefore, save your data to a CD or to another machine before you start recovering the system software.

To run the recovery process

- 1 Shut down and then restart your Logic Analyzer.

While booting up, the Logic Analyzer displays the Windows Boot Manager screen. This screen provides you the following options:

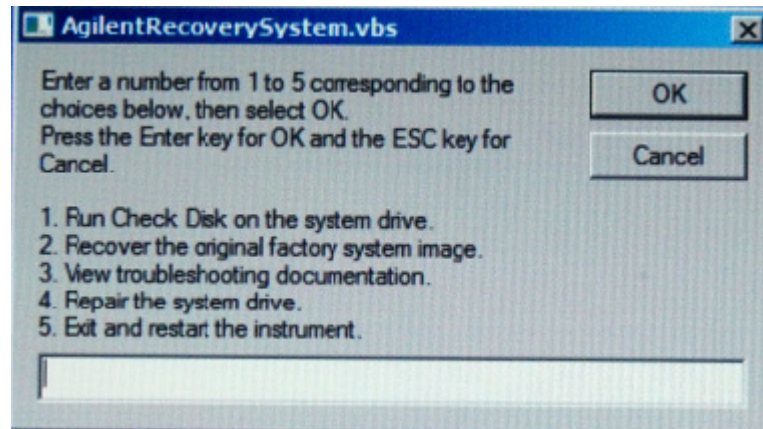
- **Microsoft Windows 7** - This is the default selected option. This option starts the Logic Analyzer with the Windows 7 operating system. This is the normal startup of the system.
- **Agilent Recovery system** - You should select this option when you want to restore/repair your Logic Analyzer software by running the Agilent recovery process.



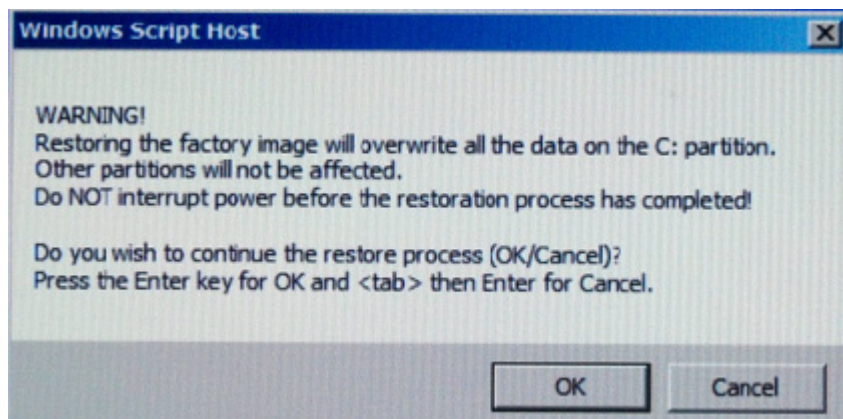
- 2 After a few seconds, Logic Analyzer automatically starts with the option selected in the Windows Boot Manager. Select the **Agilent Recovery system** option in the Windows Boot Manager screen using the arrow keys and then press Enter.

The recovery process starts preparing the system for recovery and displays the following screen with options to choose. You can enter:

- **1** to run Check Disk on the Logic Analyzer's hard disk drive. If the recovery process encounters any problems while running Check Disk, it reports these problems else it returns to the Agilent Recovery system prompt on completion of Check Disk.
- **2** to restore your Logic Analyzer software back to its original state in which it was shipped.
- **3** to view a document that provides information on the recovery process.
- **4** to repair the Logic Analysis system hard disk drive.
- **5** to exit the recovery process and restart the Logic Analyzer in the normal mode.

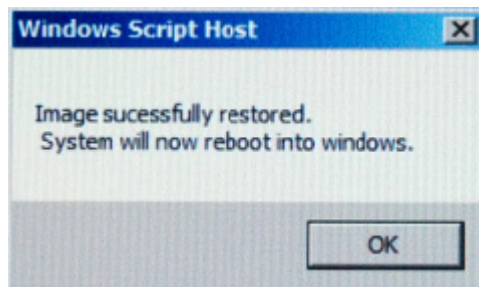


- 3 Select the second option in the above screen by entering **2** in the text box and clicking **OK**.
- 4 A warning message is displayed stating that the recovery process overwrites the data on C: drive. If you want to save your data to a CD or to another machine before you proceed further, then exit the recovery process and save your data. Else, click **OK** to proceed with the recovery process.

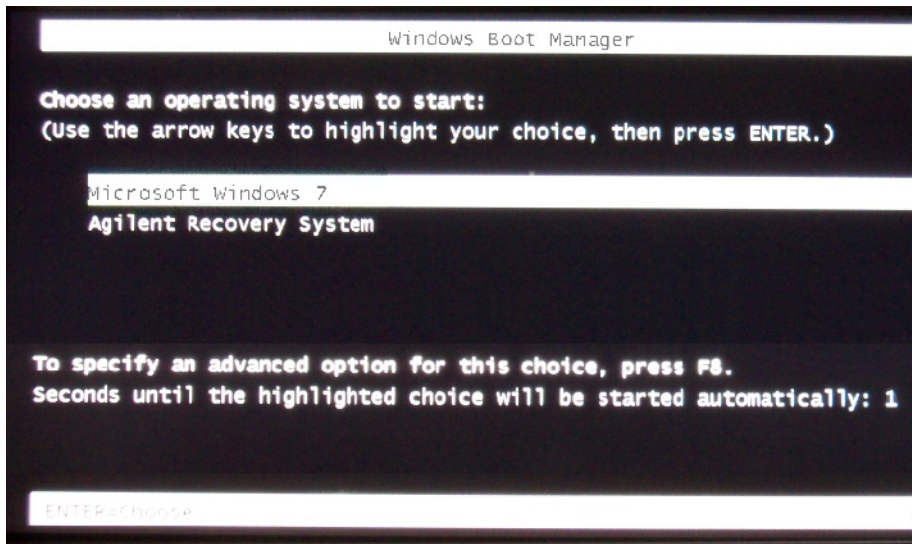


The recovery process starts.

If the recovery process is able to restore the system software successfully, then the following screen is displayed.



- 5 Click **OK** to proceed. You Logic Analysis system now reboots to Windows 7.
- 6 The Windows Boot Manager screen is displayed with **Microsoft Windows 7** as the default selection. The system automatically starts with this default selection. Alternatively, you can press Enter to proceed with the default selection.

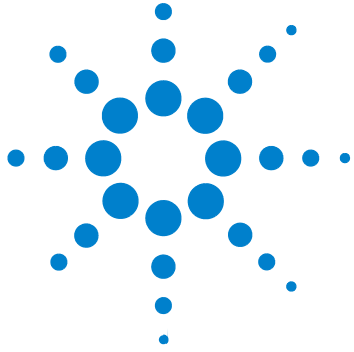


NOTE

There are situations when you are not able to run the recovery process, (for instance, when the hard disk drive of your system fails) or when running the recovery process does not recover your system software. In such situations, you can send your Logic Analysis system for hard disk repair/replacement to Agilent. Alternatively, you can contact your nearest Agilent sales/service office. To locate a sales or service office, go to www.agilent.com/find/contactus.

Contacting Agilent Service/Support

To locate a sales or service office near you, go to:
<http://www.agilent.com/find/contactus>



Warnings

- Before turning on the instrument, you must connect the protective earth terminal of the instrument to the protective conductor of the (mains) power cord. The mains plug shall only be inserted in a socket outlet provided with a protective earth contact. You must not negate the protective action by using an extension cord (power cable) without a protective conductor (grounding). Grounding one conductor of a two-conductor outlet is not sufficient protection.
- Only fuses with the required rated current, voltage, and specified type (normal blow, time delay, etc.) should be used. Do not use repaired fuses or short-circuited fuse holders. To do so could cause a shock or fire hazard.
- If you energize this instrument by an auto transformer (for voltage reduction or mains isolation), the common terminal must be connected to the earth terminal of the power source.
- Whenever it is likely that the ground protection is impaired, you must make the instrument inoperative and secure it against any unintended operation.
- Service instructions are for trained service personnel. To avoid dangerous electric shock, do not perform any service unless qualified to do so. Do not attempt internal service or adjustment unless another person, capable of rendering first aid and resuscitation, is present.
- Do not install substitute parts or perform any unauthorized modification to the instrument.
- Capacitors inside the instrument may retain a charge even if the instrument is disconnected from its source of supply.
- Do not operate the instrument in the presence of flammable gasses or fumes. Operation of any electrical instrument in such an environment constitutes a definite safety hazard.
- Do not use the instrument in a manner not specified by the manufacturer.
- To optimize your comfort and productivity, it is important that you set up your work area correctly and use your equipment properly. Refer to http://www.agilent.com/quality/Working_In_Comfort.pdf for set-up and use recommendations

- Position equipment so that it is not difficult to disconnect the power cord.

To clean the instrument

If the instrument requires cleaning:

- 1 Remove power from the instrument.
- 2 Clean the external surfaces of the instrument with a soft cloth dampened with a mixture of mild detergent and water.
- 3 Make sure that the instrument is completely dry before reconnecting it to a power source.

Safety Symbols



Instruction manual symbol: the product is marked with this symbol when it is necessary for you to refer to the instruction manual in order to protect against damage to the product.



Hazardous voltage symbol.



Earth terminal symbol: Used to indicate a circuit common connected to grounded chassis.

Index

A

administrator, 13
administrator account, 20
Agilent web
 service/support, 59
antivirus, 20

C

caution
 electrostatic discharge, 31
CD
 product software, 44
change network settings, 36
characteristics, 33
Check Disk, 56
computer name, 15
connection, high speed, 15
contact information, 59

D

debugging network, 50
disk
 clean/reformat, 54
domain, 13, 15

E

electrostatic discharge, 31

F

firewall, 20
 changing settings, 20, 37

G

grounding, 31

H

hard drive, 54
high-speed connection, 15

I

ICMP settings, 43
install
 software, 44
internet, 15
inverse assemblers, 45

L

LAN, 15
LEDs, 49

N

network
 adding logic analyzer, 13
 connection decision, 13
 debugging, 50
network connection problems, 50
network settings, 36

O

optional tools, 45

P

password, 15
power
 problems, 49
 turning off, 30

R

recovery procedures, 54
recovery process, 54
registry error, 49
restoring system, 54
running self tests, 48

S

self tests, 48
service
 contacting Agilent, 59
 ground modules, 31
 web address, 49
shut down system, 30
software
 add-in, 44
 installation, 13, 20, 44
 updating, 44
specifications, 33
standalone operation, 13
system
 power, 49
 recovery, 54
 software, 44
System recovery on Windows 7
 installation, 54

T

tools, optional, 45
touchscreen problems, 51

U

update software, 44

Index

V

virus software, [20](#)

W

windows

power problems, [49](#)

updates, [20](#)

welcome, [15](#)

welcome questions, [15](#)

Windows Boot Manager, [56](#)

Windows Firewall settings

changing, [37](#)

workgroup, [13](#)

changing, [20](#)